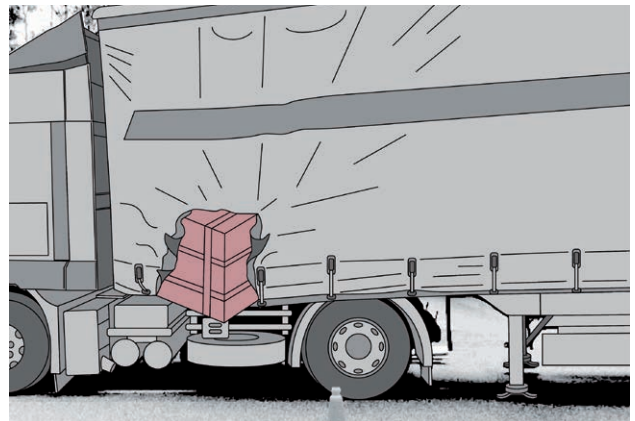
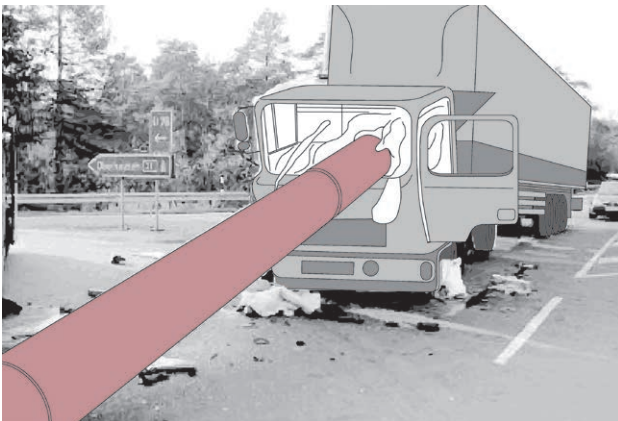
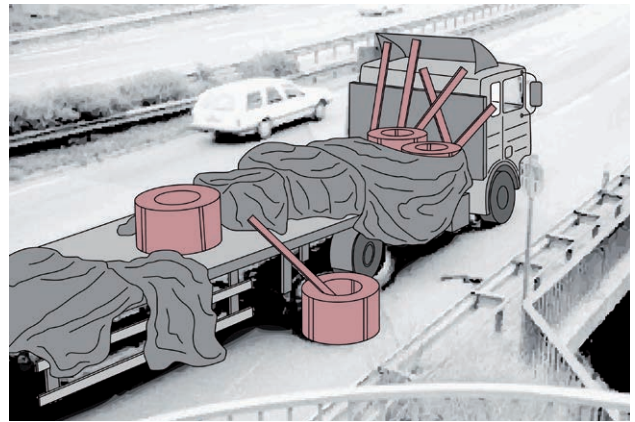
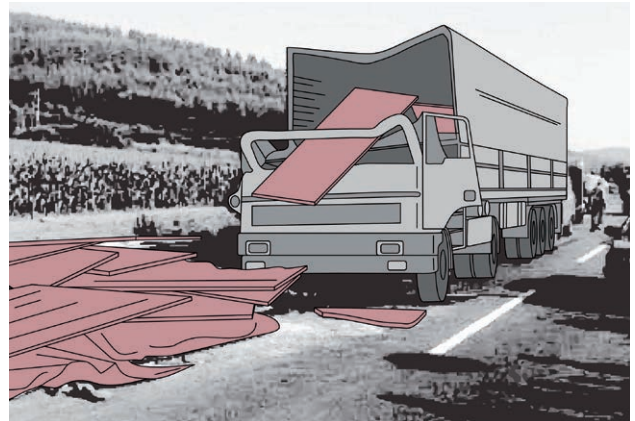


## BACKGROUND INFORMATION

# CONSEQUENCES OF INCORRECT LOAD SECURING

When transporting goods, acceleration, braking, lateral centrifugal force or vibrations can generate forces almost as high as the actual weight of the load. This can cause the load to slip, causing serious material damage or accidents involving injury to people. The load can, for instance, penetrate the front of a lorry and seriously injure or even kill the driver in the cabin. There are also dangers involved in unloading a slipped cargo. It can often simply fall from the loading, posing a serious threat to other road users. Badly secured loads are themselves often damaged. In Germany alone, damage to transported cargos amounts to several hundred million Euros. Insufficient load securing is the cause of an estimated 20% of all heavy goods traffic accidents.

REG ASM CILS EN 092019  
v1.2022

REGUPOL Australia Pty. Ltd.  
155 Smeaton Grange Road  
Smeaton Grange NSW 2567  
Australia

Tel. +61 2 4624 0050  
industriysales@regupol.com.au  
www.regupol.com.au

 **REGUPOL**